

## Claytor Lake Project No. 739 Recreation Assessment & Angler Use Survey Update



November 28, 2007



1

## Presentation Agenda

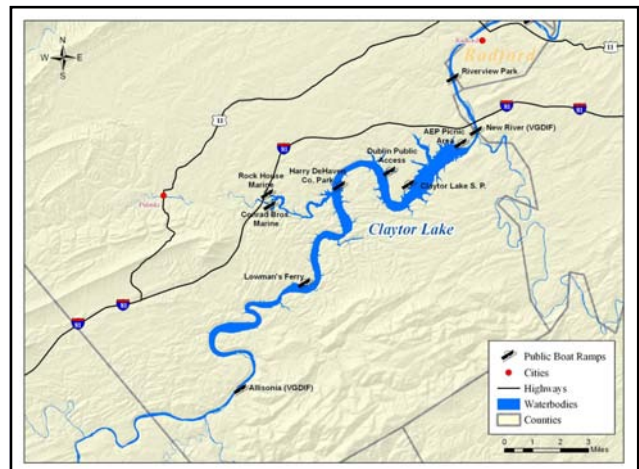
- Objectives
- Update by Method
  - Recreation Use Assessment
  - Angler Use Survey
- Schedule

2

## Recreation Use Study Overall Study Objectives

- Document facilities and activities
- Collect information on use, user preferences, and user perceptions
- Forecast recreational use numbers and activity trends over the term of an anticipated license
- Characterize typical boating densities on the lake


3





## Recreation Assessment Study Components


- Facility Inventory
- Existing Use & Activity Estimates
- Future Use & Activity Estimates
- Boating Density



**VDGIF Ramp below dam**

## Recreation Assessment Study Facility Inventory - Methods


- Conduct site visits to each publicly accessible site at the Project to document the facilities and resources
- Identify and characterize the public facilities and amenities at each site
- GPS & Photographs



Allisonia Public Boat Ramp<sup>7</sup>

## Recreation Assessment Study Facility Inventory - Update

- Have finished initial reconnaissance work
  - Photographs
  - Layout
  - Parking/facility capacities
- Finalizing inventories for Reporting



Allisonia Boat Ramp

## Recreation Use Study Public Use Sampling Effort

- Claytor Lake Access Point Interview and Spot Counts
  - March 1 to November 30
  - 20 days/month
  - 14 weekdays, 6 weekend days
  - 2 zones (#1:C.L.S.P., Dublin, Harry DeHaven, Below the Dam; #2: Rock House, Conrad Bros., Lowman's Ferry, Allisonia); equal weight
  - AM or PM focus – start time considers day length



Dublin Ramp

## Recreation Use Study New River Sampling Effort

- River Access Point Interviews and Spot Counts
  - Public Boat Launch Sites (13 Total)
  - March 1 to November 30
  - 9 days/month
  - 3 zones
  - equal weight probabilities between zones
  - 6 weekend/3 weekdays
  - 8 hr sampling day
  - Time at each access point is sampling day length minus driving time (equal time at each site)
  - Start time will focus the study on either AM or PM



McCoy Falls, New River

10

## Recreation Assessment Study Use and Needs Assessment - Methods

As of October 25, 2007

Location	Number of Interviews	Number of Spot Counts
Claytor Lake	684	361
New River	495	480
Total	1,179	841

Since then, practically finished sampling and now processing interviews and spot counts for reporting

11

## Recreation Assessment Study Use and Needs Assessment – Points for Discussion

Interviews and Spot Counts – April/May

Traffic Data – Incomplete Records

- To be used in conjunction with interview data to help estimate use numbers
- Berger counters installed at Conrads, Rock House, Harry DeHaven & Dublin
- Incomplete records for Harry DeHaven & Dublin
  - June 1 to Labor Day
- Do have spot counts and aerial photos during time of missing data

12

## Recreation Assessment Study Use and Needs Assessment - Mailings

- 1100 Surveys mailed out to shoreline residents
- 1100 Surveys mailed out to regional residents
- Processing returns and compiling results for reporting



Claytor Lake State Park - 5/21

13

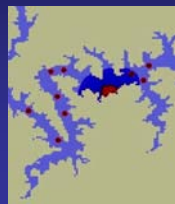
## Recreation Assessment Study Future Recreational Use Assessment - Update

- Future recreation demand will be assessed in 10-year increments out to 2050.
  - Growth in recreation activities projections will be from "Outdoor Recreation in American Life: A National Assessment of Demand and Supply Trends" by Cordell et. al., 1999.
  - VA population and recreation trend estimates will be evaluated within the context of Cordell's future use predictions.
- Dependent on existing use estimates



## Recreation Assessment Study Existing Boating Density Analysis - Update

- Aerial photographs of watercraft:
  - Project area: 13 days between Memorial Day and Labor Day.
  - New River: 3 days; near the start of sampling in April, Labor Day, and October.
- 8 weekend/4 weekday/Labor Day
- The boats will be digitized off of the photographs and entered into a GIS for analysis.



example

15

## Angler Use Survey Study Objectives

### To Quantify Angler:

- Use (Effort, Catch, & Harvest)
- Preferences
- Expenditures



Lowman's Ferry Bridge

16

## Angler Use Survey Study Methods

- A roving creel survey on Claytor Lake and an access point survey at the area directly below Claytor dam.
- 2 sampling zones (all on water anglers as well as bank/pier anglers at S.P. and Harry DeHaven County Park).
- 5 weekdays/5 weekend days – all holidays sampled.
- AM/PM start times weighted 0.3/0.7 respectively
- Data will be supplied to VDGIF modelers for analysis in existing computer models and returned for reporting

17

## Angler Use Survey Study Update

- Finishing surveys and interviews
- Will pre-process the raw data
- Temporarily hand over to VDGIF for model analysis
- Lots of night fishing and evening start tournaments not accounted for directly in creel (but is available via interviews with hosts)

18

## Recreation and Angler Use Study Expected Results

- Inventory of sites and opportunities within the Project
- Visitor profile information
- Characterization of use, activities, and preferences
- Expected changes in recreation activity at the Project for next 50 years
- Characterization of boating density
- Angler effort, catch, and harvest
- Species preferences

19

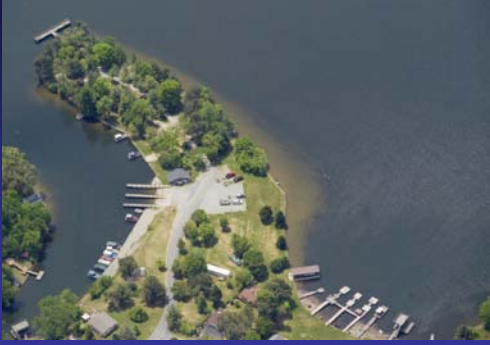
## Recreation Use Study Schedule

- Study Plan update today
- Field work ends – November 30, 2007
- Draft report – Early 2008
- Final report – Spring 2008



Lowman's Ferry Bridge, Claytor Lake<sup>20</sup>

## Discussion



Harry DeHaven County Park

21